

# FLEXICELL<sup>®</sup>-XF



## Cross-Linked Closed Cell Polyolefin Thermal Insulation Foam

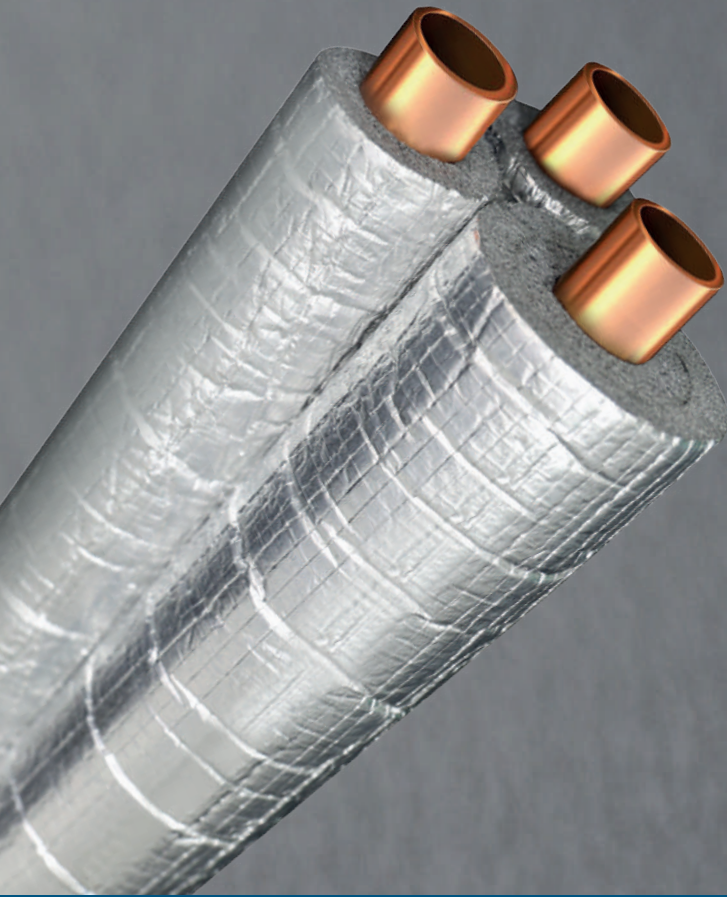


AS 1530.3  
ASTM E84



[www.flexicell.com.au](http://www.flexicell.com.au)





FlexiCell® Tubes

**FlexiCell® XF** is a light or dark grey flexible, cross-linked closed-cell polyolefin thermal insulation foam with factory applied reinforced aluminum foil, designed to control condensation and energy losses. It is suitable for such applications like duct and pipe insulation for air conditioning, cold water, chilled water, hot water and refrigeration.

**FlexiCell® XF** is designed for indoor and outdoor applications, however outdoor application need additional protection against weather conditions and UV radiation.






FlexiCell® Rolls



## FIRE AND SMOKE PERFORMANCE

FlexiCell® XF meets AS 1530.3 - early fire hazard properties of material, but also is certified in accordance with UL 723 and UL 94. Moreover, it is approved as per FM 4924. Please refer to below table for further details.

	 UL 723	 UL 94	 FM 4924
Tubes thickness	from 13 mm to 50 mm	up to 50 mm	up to 50 mm
Sheets & Rolls thickness	from 13 mm to 25 mm	up to 25 mm	up to 25 mm



## EXCELLENT THERMAL EFFICIENCY

FlexiCell® XF has very low thermal conductivity of 0.032 W/m·K at 23 °C, guaranteeing high performance in thermal insulation applications but also provides an excellent level of condensation control due to its closed cell structure.



## ENVIRONMENTALLY FRIENDLY

FlexiCell® XF is CDC and HCFC free. It does not contribute to Ozone Depletion Potential and has very low Volatile Organic Compound Emission Level tested in accordance with CDPH v1.2.



## ZERO WATER VAPOUR PERMEABILITY

FlexiCell® XF can be installed without any additional vapor barriers due to its closed cell structure.

This excellent protection against condensation ensures the long term thermal efficiency of the insulation and its long lifespan.





# FLEXICELL® -XF

## TECHNICAL DATA

**Description:** FlexiCell® XF is a light or dark grey flexible, cross-linked closed cell polyolefin thermal insulation foam with factory applied reinforced aluminium foil facer for mechanical protection, mainly designed to control condensation and energy losses.

Property	Value/ Assessment	Tested acc. to:
<b>Thermal conductivity</b> at 23 °C	0.032 W/m K	ASTM C518
<b>Temperature range</b> Max. line temperature <i>Please consult our technical team for applications with temperatures below -40 °C.</i>	+105 °C (+80 °C with PSA*)	ASTM C411
<b>Density of foam core</b>	25 kg/m <sup>3</sup> (±3 kg/m <sup>3</sup> )	
<b>Water vapor diffusion</b>	μ>50000	ASTM E96
<b>Water vapor permeance</b>	0.027 ng/Pa.s.m <sup>2</sup>	ASTM E96
<b>Water absorption</b>	0.05 kg/m <sup>2</sup>	BS EN 12087
<b>Reaction to fire</b>	FSI<25 & SDI<50 Class 0 HF-1  Ignitability index: 0 Spread of flame index: 0 Heat evolved index: 0 Smoke developed index: 1	ASTM E84/UL723** BS 476 part 6 & 7 UL94**  AS/NZ 1530.3
<b>FM approval</b>	Approved	FM 4924**
<b>Smoke &amp; toxicity</b>	Passed	BS EN 45545
<b>Chemical analysis</b>	<0.05% (water soluble chloride ions) pH - 7.6	ASTM C871
<b>Resistance to fungi</b>	Zero growth	ASTM G21
<b>Resistance to bacteria</b>	Zero growth	ISO 22196
<b>TVOC (Emission rate - 24 hours)</b>	<0.01 mg/m <sup>3</sup>	CDPH V1.2
<b>Environment friendly</b> Ozone Depletion Potential (ODP) 0 Global Warming Potential (GWP) <5 CFC & HCFC, dust, fibres & asbestos Free	<b>Size Availability</b> <b>Tubes thickness:</b> 10, 12, 15 mm 20, 25, 30, 32, 35, 40 mm 50 mm <b>Sheets thickness:</b> 3, 5, 10, 12, 15, 20, 25 mm <b>Rolls thickness:</b> 3, 5, 10, 12, 15, 20, 25 mm	<b>Tubes ID:</b> 6-125 mm 6-220 mm 12-200 mm <b>Sheets size:</b> 1.2 x 2.4 m <b>Rolls size:</b> 1.2 x 10-20 m (depending on thickness)
<b>Note:</b> All outdoor applications of FlexiCell® XF need to be protected by FlexiCell® approved coating or weather resistant cladding.		

\*PSA - Pressure Sensitive Adhesive

\*\* Certificates and classification marks applicable for selected thicknesses only. Please refer to page no. 3 for more details.

This information, presented by Hira Industries, is accurate to the best of our knowledge at the time of publication. All product data is based on average values and should be used as a general guide only. Due to the unique nature of specific applications, results may vary according to individual circumstances beyond the manufacturers control. As our products are subject to constant research and development, Hira Industries reserves the right to amend, modify and/or update the content of this publication at any time, without prior notice. Visit [flexicell.com.au](http://flexicell.com.au) for more information, technical specifications, installation guidelines and product warranty terms and conditions.

### Manufactured by Hira Industries

P.O. Box 50673, Dubai - UAE

T: +971 4 884 8414

E: [enquiry@rhira.com](mailto:enquiry@rhira.com)

[www.rhira.com](http://www.rhira.com)

### Australian Branch Address

18 Baddeley Circuit, Croydon

Vic.3136, Australia.

T: +61 419 701 375

[www.flexicell.com.au](http://www.flexicell.com.au)

