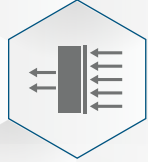


FLEXICELL[®] -XLPE N CLAD



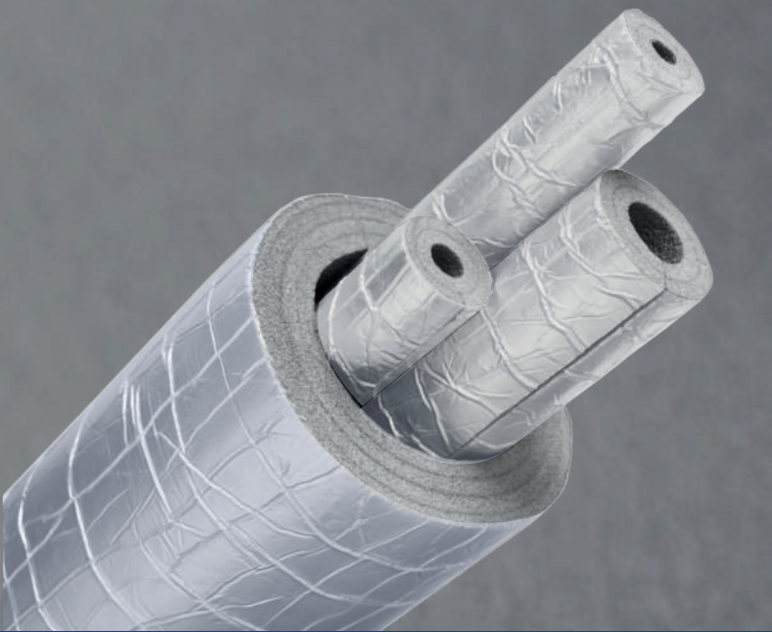
Cross-Linked Closed Cell

Polyolefin Thermal Insulation Foam for Indoor and Outdoor Applications

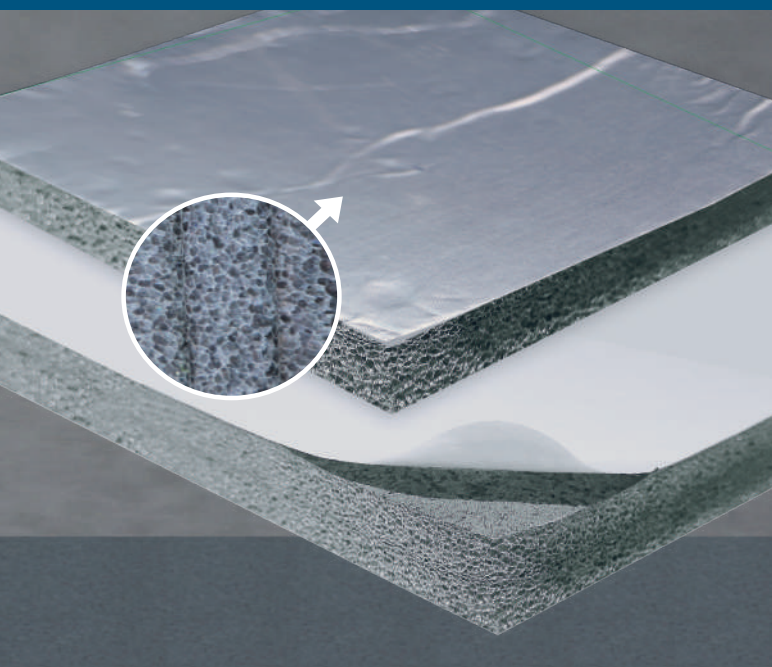


AS 1530.3 TESTED

www.flexicell.com.au



FlexiCell® Tubes



FlexiCell® Sheets



FlexiCell® Prefabricated Fittings

FlexiCell® XLPE N Clad is your 2-in-1 innovative solution offering energy savings combined with reliable weathering protection and it can be used in specific applications such as pharmaceutical, food and beverages, healthcare, data centers, industrial and marine.

FlexiCell® XLPE N Clad is easy to install and offers time savings of more than 50% compared to non-factory applied jacketing systems such as metal sheets or painted canvas cloths.



FlexiCell® XLPE N Clad prefabricated fittings are made in different sizes and shapes such as Elbows, T and Y sections.

Prefabricated fittings are available in a variety of wall thicknesses and inner diameters.

FIRE AND SMOKE PERFORMANCE

FlexiCell® XLPE N Clad meets AS 1530.3 - early fire hazard properties of materials.



EXCELLENT THERMAL EFFICIENCY

FlexiCell® XLPE N Clad has a very low thermal conductivity, guaranteeing high performance in thermal insulation applications. Further to this, as FlexiCell® XLPE N Clad is closed cell, it also provides excellent levels of condensation control.



ENVIRONMENTALLY FRIENDLY

FlexiCell® XLPE N Clad is CFC and HCFC free product. It does not contain, nor use in its production, any substances that contribute to Ozone Depletion Potential (ODP). FlexiCell® XLPE N Clad is fibre free and has a very low Volatile Organic Compound (VOC) emission level.



ZERO WATER VAPOUR PERMEABILITY

Condensation control is a key performance aspect of any insulation. FlexiCell® XLPE N Clad can be installed without any additional vapour barriers due to its closed cell construction, and watertight aluminium foil barrier. Moreover, material is suitable for outdoor applications as its factory applied durable foil facer is UV and weather resistant.



QUICK & EASY TO INSTALL

FlexiCell® XLPE N Clad is fast and easy to install. Factory applied durable foil facer offers time saving of more than 50% in comparison to application of traditional jacketing systems such as metal sheets or painted canvas cloths. This results in reduced installation time, thereby affording significantly increased productivity.



TECHNICAL DATA

Properties	Value/ Assessment	Tested to:
Temperature Range Max. Line Temperature Min. Line Temperature	+105 °C (+80 °C with PSA*) -80 °C (-30 °C with PSA*)	ASTM C1427
Thermal Conductivity (at 23 °C)	0.036 W/m·K	ASTM C518
Density of foam core	25 ± 3 kg/m ³	
Water vapor diffusion resistance factor	μ > 85000	BS EN 12086
Water vapor permeance	5.1 x 10 ⁻¹⁰ g/Pa.m ² .s	BS EN 12086
Water absorption	0.0023 g/cm ²	JIS K 6767
Reaction to fire	FSI <25, SDI <50	ASTM E84
	Class O	BS 476 Part 6 & 7
	Ignitability 0 Spread of Flame 0 Heat Evolved 0 Smoke Developed 1	AS 1530.3
UV Ageing (UV Resistance)	Excellent	ISO 4892-3
Resistance to salt spray test	Excellent No changes in thermal performance & appearance.	
Tensile strength	>950 N MD >820 N TD	ASTM D751
Tear strength	>120 N MD >90 N TD	ASTM D751
Puncture resistance	>700 N	ASTM D4833
Resistance to fungi	Zero growth	ASTM G21
Ozone resistance	Excellent	ASTM D1149
Environmental Friendly		Size Availability
Ozone Depletion Potential (ODP)	0	Tubes thickness:
Global Warming Potential (GWP)	<5	10, 12, 15 mm
CFC & HCFC, Dust, Fibres	Free	20, 25, 30, 32, 35, 40 mm
		50, 60 mm
		Tubes ID:
		6-125 mm
		6-711 mm
		12-711 mm
Storage life: Can be stored for 24 months (12 months with PSA*) from manufacturing date in a dry, clean, dust free room at normal humidity and ambient temperature. <i>*PSA - Pressure Sensitive Adhesive</i>		Sheets thickness:
		12, 15, 20, 25, 30, 35, 40, 50 mm
		Size of sheets:
		1.2 x 2.4 m

This information, presented by Hira Industries, is accurate to the best of our knowledge at the time of publication. All product data is based on average values and should be used as a general guide only. Due to the unique nature of specific applications, results may vary according to individual circumstances beyond the manufacturers control. As our products are subject to constant research and development, Hira Industries reserves the right to amend, modify and/or update the content of this publication at any time, without prior notice. Visit flexicell.com.au for more information, technical specifications, installation guidelines and product warranty terms and conditions.

Manufactured by Hira Industries

P.O. Box 50673, Dubai - UAE
T: +971 4 884 8414
E: enquiry@rhira.com
www.rhira.com

Australian Branch Address

18 Baddeley Circuit, Croydon
Vic.3136, Australia.
T: +61 419 701 375
www.flexicell.com.au

