

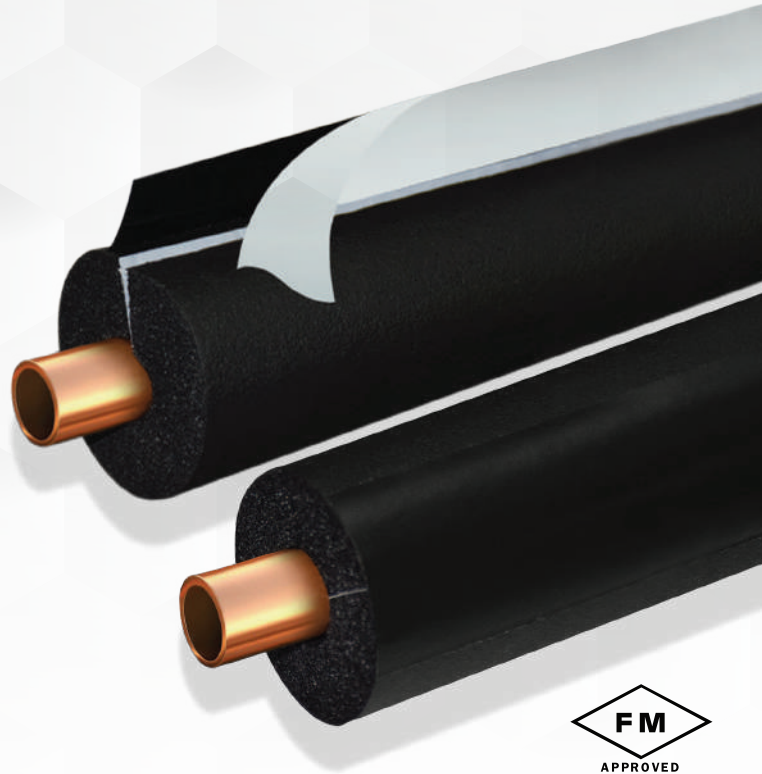
FLEXICELL[®] - NBR

LAP SEAL TUBES



FlexiCell[®] NBR Lap Seal thermal insulation tubes are made of flexible closed cell elastomeric foam.

Installation is up to 50% faster compared to traditional insulation systems, especially designed to prevent condensation and energy losses.



Product does not include copper pipes.

Technical Data

Temperature Range	
Max. Line Temperature	80 °C
Min. Line Temperature	-40 °C
ASTM C534 TYPE 1	

FlexiCell[®] Technical Support should be consulted for applications with temperature below -40° C.

Thermal Conductivity at 23°C	6 mm-32 mm - 0.032 W/m·K
ASTM C518	

Density (foam core only)	40 - 70 kg/m ³
--------------------------	---------------------------

Water Vapor Diffusion Resistance Factor	μ >17,000
BS EN 12086	

Water Vapor Permeance	1.56 E-09 g/m ² .s.Pa
ASTM E96	

Water Absorption	0.06% by volume
ASTM C209	

Reaction to Fire (foam core only)	
AS 1530.3	

Ignitability Index:	0
Spread of Flame Index:	0
Heat Evolved Index:	0
Smoke Developed Index:	3
Group	2
Approved	

ISO 5660
FM 4924

Resistance to Fungi	Zero growth
ASTM G21	

Resistance to Bacteria	Zero growth
ISO 22196	

Emission (VOC level)	<0.5 mg/m ² /hr
ASTM D5116	

Corrosion Risk	No corrosion risk for steel, stainless steel and copper pipe
DIN 1988	

Environmental Friendly	
Ozone Depletion Potential (ODP)	0
Global Warming Potential (GWP)	<5
CFC & HCFC, Dust, Fibres & Asbestos	Free

Storage Life
Can be stored for 12 months from manufacturing date in a dry, clean, dust free room at normal humidity and ambient temperature.

FlexiCell® NBR Lap Seal Tubes







Insulation Tube Sizes		FlexiCell® NBR Lap Seal Thickness									
		3/8" - 9 mm		1/2" - 13 mm		3/4" - 19 mm		1" - 25 mm		1-1/4" - 32 mm	
Inch	mm	Code	PC/Box	Code	PC/Box	Code	PC/Box	Code	PC/Box	Code	PC/Box
3/8"	9			NBRT13X9/LS	75	NBRT19X9/LS	40	NBRT25X9/LS	25	NBRT32X9/LS	20
1/2"	13			NBRT13X13/LS	60	NBRT19X13/LS	40	NBRT25X13/LS	25	NBRT32X13/LS	20
5/8"	16	NBRT9X16/SS	85	NBRT13X16/LS	55	NBRT19X16/LS	35	NBRT25X16/LS	25	NBRT32X16/LS	15
3/4"	19	NBRT9X19/SS	70	NBRT13X19/LS	45	NBRT19X19/LS	30	NBRT25X19/LS	20	NBRT32X19/LS	15
7/8"	22	NBRT9X22/SS	65	NBRT13X22/LS	40	NBRT19X22/LS	30	NBRT25X22/LS	20	NBRT32X22/LS	12
1"	25	NBRT9X25/SS	50	NBRT13X25/LS	40	NBRT19X25/LS	25	NBRT25X25/LS	20	NBRT32X25/LS	12
1-1/8"	28	NBRT9X28/LS	50	NBRT13X28/LS	36	NBRT19X28/LS	25	NBRT25X28/LS	18	NBRT32X28/LS	12
1-1/4"	32	NBRT9X32/LS	35	NBRT13X32/LS	30	NBRT19X32/LS	20	NBRT25X32/LS	15	NBRT32X32/LS	12
1-3/8"	35	NBRT9X35/LS	30	NBRT13X35/LS	30	NBRT19X35/LS	20	NBRT25X35/LS	15	NBRT32X35/LS	12
1-1/2"	38	NBRT9X38/LS	30	NBRT13X38/LS	25	NBRT19X38/LS	17	NBRT25X38/LS	12	NBRT32X38/LS	10
1-5/8"	42	NBRT9X42/LS	25	NBRT13X42/LS	25	NBRT19X42/LS	17	NBRT25X42/LS	12	NBRT32X42/LS	10
1-7/8"	48	NBRT9X48/LS	20	NBRT13X48/LS	20	NBRT19X48/LS	15	NBRT25X48/LS	10	NBRT32X48/LS	8
2"	51	NBRT9X51/LS	20	NBRT13X51/LS	20	NBRT19X51/LS	15	NBRT25X51/LS	9	NBRT32X51/LS	8
2-1/8"	54	NBRT9X54/LS	20	NBRT13X54/LS	20	NBRT19X54/LS	15	NBRT25X54/LS	9	NBRT32X54/LS	8
2-3/8"	60			NBRT13X60/LS	18	NBRT19X60/LS	12	NBRT25X60/LS	9	NBRT32X60/LS	6
2-1/2"	63			NBRT13X63/LS	18	NBRT19X63/LS	12	NBRT25X63/LS	8	NBRT32X63/LS	6
2-5/8"	67			NBRT13X67/LS	15	NBRT19X67/LS	10	NBRT25X67/LS	8	NBRT32X67/LS	5
2-7/8"	73			NBRT13X73/LS	15	NBRT19X73/LS	10	NBRT25X73/LS	6	NBRT32X73/LS	4
3"	76			NBRT13X76/LS	12	NBRT19X76/LS	10	NBRT25X76/LS	6	NBRT32X76/LS	4
3-1/8"	79			NBRT13X79/LS	12	NBRT19X79/LS	10	NBRT25X79/LS	6	NBRT32X79/LS	4
3-1/2"	89			NBRT13X89/LS	10	NBRT19X89/LS	8	NBRT25X89/LS	6	NBRT32X89/LS	4
3-5/8"	92			NBRT13X92/LS	8	NBRT19X92/LS	6	NBRT25X92/LS	6	NBRT32X92/LS	4
4"	102			NBRT13X102/LS	8	NBRT19X102/LS	6	NBRT25X102/LS	4	NBRT32X102/LS	3
4-1/8"	105			NBRT13X105/LS	8	NBRT19X105/LS	6	NBRT25X105/LS	4	NBRT32X105/LS	3
4-1/4"	110			NBRT13X110/LS	8	NBRT19X110/LS	6	NBRT25X110/LS	4	NBRT32X110/LS	3
4-1/2"	114			NBRT13X114/LS	6	NBRT19X114/LS	6	NBRT25X114/LS	3	NBRT32X114/LS	3

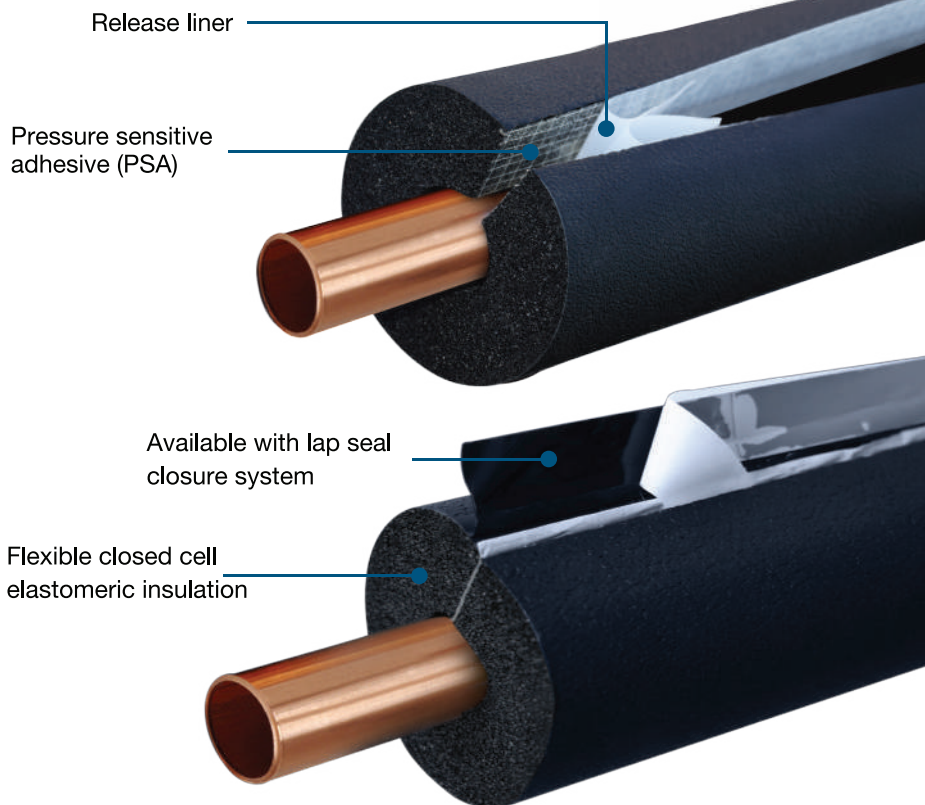
Note: Available length of tubes 1.8 m

SS - Self Seal

LS - Lap Seal

Features

-  Closed cell structure
-  Mold and mildew resistant
-  Temperature range: -40 °C to +80 °C
-  Condensation control and energy saving
-  Suitable for cooling and heating systems
-  Fast and easy installation compared to traditional solutions



This picture uses props, the product is only FlexiCell® NBR Lap Seal.

Disclaimer: This information on Hira Industries products is presented to the best of our knowledge. All product data is based on average values and is for guidance only. As these products are subject to constant research and development, we reserve the right to update the contents without notice.

Manufactured by Hira Industries

P.O. Box 50673, Dubai - UAE

T: +971 4 884 8414

E: enquiry@rhira.com

www.rhira.com

Australian Branch Address

18 Baddeley Circuit, Croydon

Vic.3136, Australia.

www.flexicell.com.au